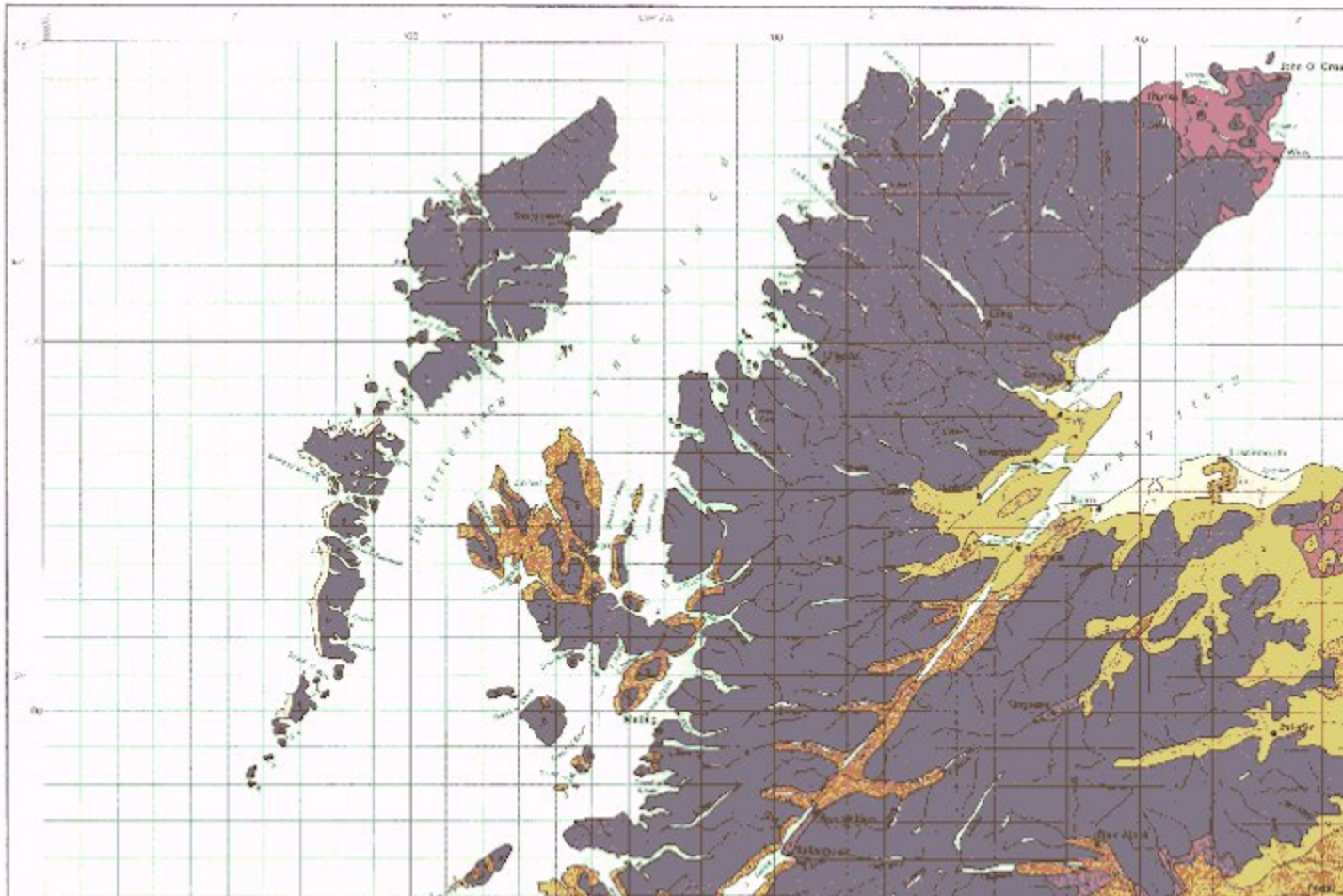


*Please click on the required
title below :*

[Back](#)

**Winter Rain
Acceptance Potential**



**Average annual
rainfall (1941 - 1970)
millimetres**

**Rainfall depths
(M5 - 60 minutes)
millimetres**

**Ratio of M5 - 60
minutes to M5 - two
day rainfalls
(r x 100)**

[Back](#)